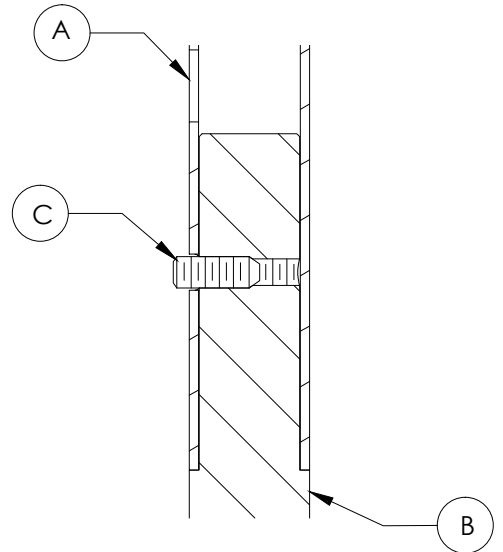
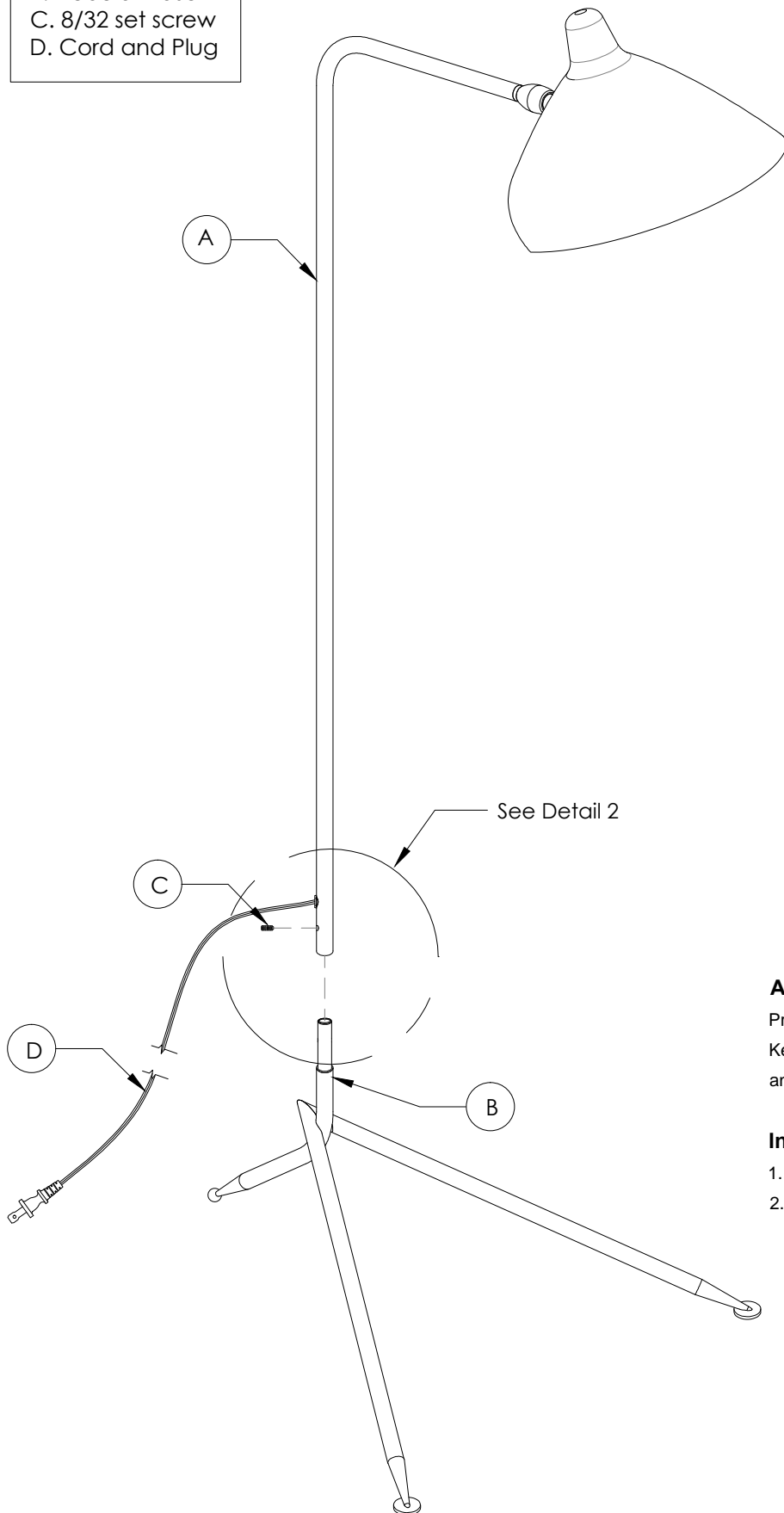


Parts

- A. Top Arm
- B. Tubular Base
- C. 8/32 set screw
- D. Cord and Plug



Detail Section View 2
Scale 1 : 1

Assembly

Prepare the parts in the same order as the graphic.
Keep the top arm with the cover to prevent any scratch
and just let the bottom part of it visible for assembly.

Instructions Assembly

1. Unscrews the Set screw (# 8-32) (C).
2. Slide the Top arm (A) Over the Tubular Base (B) and secure it with the set screw (C).