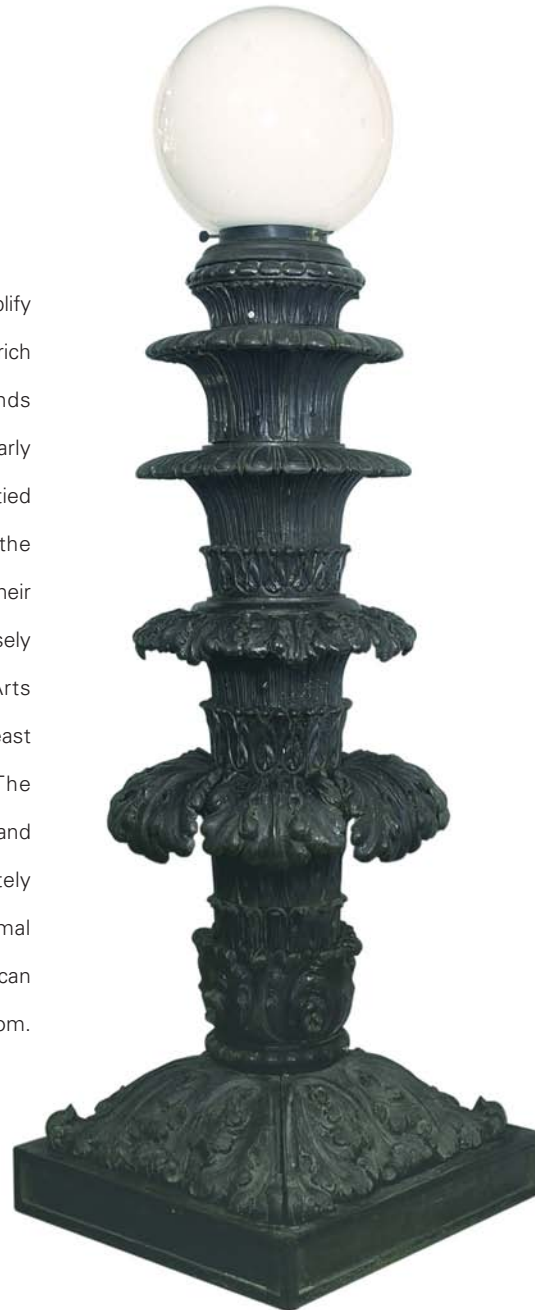


BEAUX ARTS POST LAMP

(FROM 258 RIVERSIDE DRIVE; NEW YORK, NY)

Cast in iron, these two Beaux Arts post lamps exemplify the movement, characterized by perfect symmetry, rich ornamentation, and grand scale. Each lamp stands about 7' 6" tall, with a 2' 5" square base. Particularly significant to the history of New York, and closely tied to the progression of all great American cities, the lamps were designed by McKim, Mead, & White. Their architectural firm, bearing the same name, was closely associated with the City Beautiful and Beaux Arts movements in the United States (particularly the east coast), at the turn of the twentieth century. The purpose of these movements was to restructure and clean up the confusion of American cities, ultimately leaving them with a sense of order and formal presence. The lamps are offered as a pair only, and can be seen on display in our Chicago showroom.



REF# UA38 SV \$45,000 (sold as pair only)

*Please contact our Chicago Showroom for more information.