

ASEMBLY INSTRUCTIONS

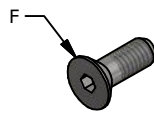
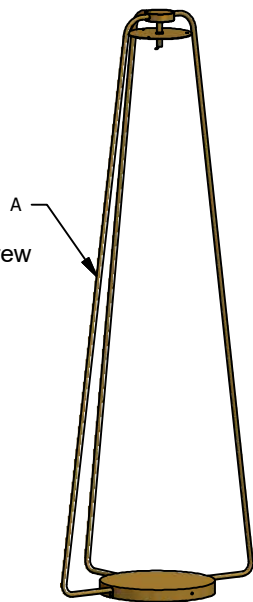
Tribeca Park Floor Lamp Item# UA5049-A M

Assembly

Prepare the parts. Keep the parts covered to prevent scratches just exposed when it required. Requires two people for installation.

Parts

- A. Main assembly
- B. Top Cover
- C. Bar bracket
- D. Shade Bracket
- E. Shade
- F. Head cap screw
- G. Head machine screw



Head Cap Screw
Qty:2



Head Machine Screw
- 4-40
Qty:3

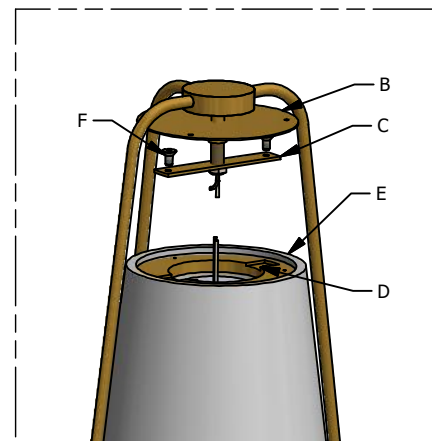
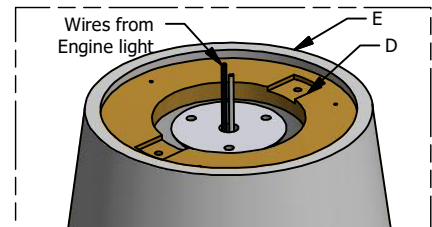
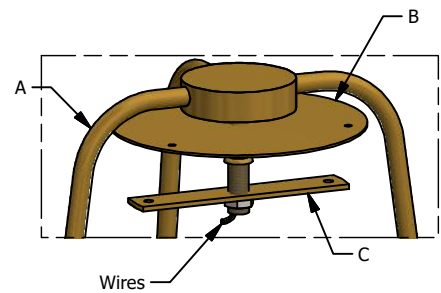
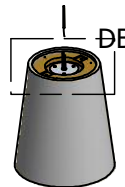


Fig .1

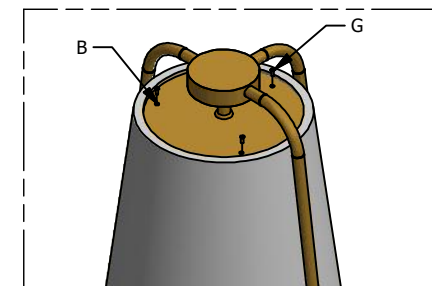


Fig.2

Instructions Assembly

1. Unpack and prepare the main assembly (A), shade assembly (E), and the screws (F) and (G).
2. On the main assembly (A), Slide up the top cover (B) to have access to the bar bracket (C).
3. Hold the Shade assembly (E) below the bar bracket (C) and tight screw the bar bracket to the Shade bracket with the Head cap screws (F) using the Allen key provided. Fig.1
4. Gently take out the wires from the main assembly (A) and connect them with the wires from the engine light on the shade assembly (E) Black with black and white with white.
5. When the wires are connected, push them back inside the shade bracket (D).
6. Slide down the top cover (B) and sit on the shade bracket (D).
7. Screw the head machine screw (G) from the top cover (B) to the shade bracket (D).Fig.2