


**Lenox Cabinet Large**

5 1/2" deep UA2560 BA

4" deep UA2560-S BA

\$3,975 Polished Brass

\$4,315 Green Patina\*, Brown Patina\*

 \$4,640 Antique Brass\*  
 Statuary Brown [gloss or matte]\*  
 Statuary Black [gloss or matte]\*

 \$5,230 Polished Nickel, Satin Nickel\*, Light Pewter\*  
 Polished Chrome, Black Nickel [gloss or matte]\*  
 Burnished Nickel

 Custom finishes not returnable

Notes It is difficult to get chrome plating to flow into inside corners of 90° angles. A touch of brass may be visible on the inside corner.

The inside of a chrome Lenox Medicine Cabinet door is always nickel.

Set includes door, frame, threaded rods, brackets, and shelf supports (8 washers)

Marble box sold separately with 3 glass shelves



Installation instructions available online for download

Each of the 4 brackets, whether standard or shallow, are fit to a specific position. The brackets are numbered and match numbers in the frame. Brackets are not interchangeable. Be sure to order the correct depth brackets.

Mirrors with square corners come flat. Please inquire for bevel pricing.

Replacement Shelf Brackets [Pair]  
 UA6125-B  
 See next page for pricing.

 \$350 Replacement Mirror with No Bevel  
 23" x 29 1/8"  
 UA6132-L BG

**Guidelines:**

The marble box is 3/8" wider than the outside dimension of the frame.

The opening in the wall for the box is 5/8" larger than the outside dimension of the frame, allowing a 1/8" gap on each side between the box and the blocking.

The outside dimension of the frame is 1 1/8" wider than the inside of the box.

All above dimensions are based on the marble box being constructed with 3/4" thick marble.

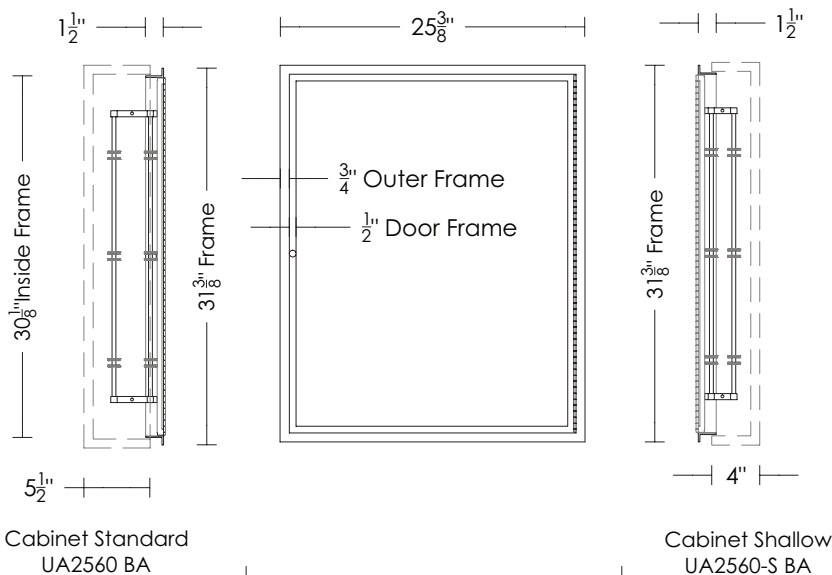


**Brackets and Shelves**

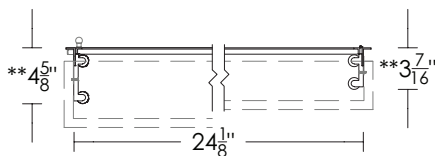
Notes: Each of the 4 brackets, whether standard or shallow, are fit to a specific position. The brackets are numbered and match numbers in the frame. Brackets are not interchangeable. Be sure to order the correct depth brackets.

Replacement Shelf Brackets [Pair]  
Requires custom fitting and machining  
at our factory  
UA6125-B

- \$250 Price 1
- \$290 Price 2
- \$320 Price 3
- \$380 Price 4



\*\*Overall depth from front of door to back of washer shelf support .





**Lenox Marble Box Large**

Standard UA2560-M BA  
 Shallow UA2560-MS BA

Call for Linea Stone, Lagos Azul pricing

Carrara, Statuary Michelangelo, Rosa Verona, Blue Celeste

Black Mosaic Granite, Blue Persa Granite, Verde Fuoco Granite

White Onyx, Statuary White, Calacatta Gold, Thassos, Absolute Black Granite

Notes: Marble box comes with 3 glass shelves

If you are providing your own box, the glass shelves are custom and must be ordered separately. Please provide a template for the glass shelves after the box and frame are installed.

**Guidelines:**

The marble box is 3/8" wider than the outside dimension of the frame.

The opening in the wall for the box is 5/8" larger than the outside dimension of the frame, allowing a 1/8" gap on each side between the box and the blocking.

The outside dimension of the frame is 1 1/8" wider than the inside of the box.

All above dimensions are based on the marble box being constructed with 3/4" thick marble.

Additional Set of Washers (consists of 8)

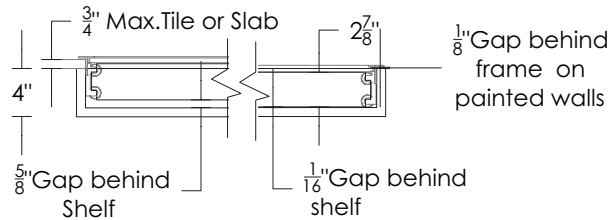
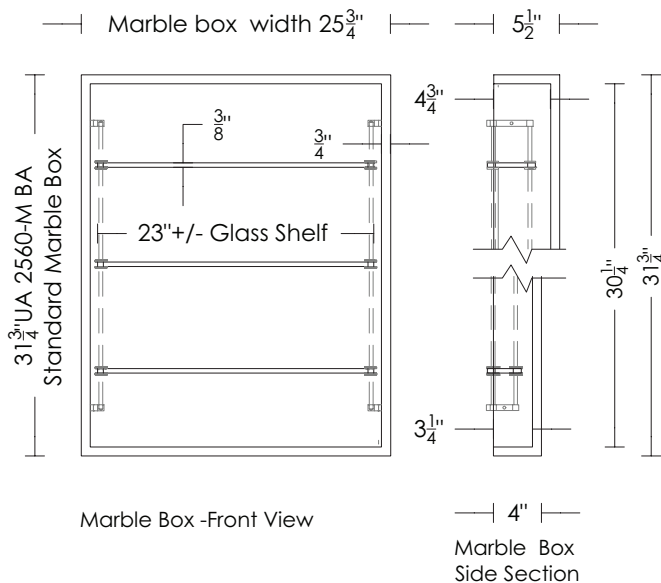
\$290 Standard UA6125-RP

\$290 Shallow UA6125-S-RP

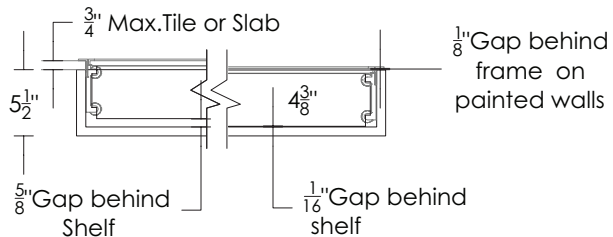
Replacement Glass Shelf

\$130 Standard UA6125 BG

\$130 Shallow UA6125-S BG



Shallow Marble Box Plan section



Standard Marble Box Plan section

