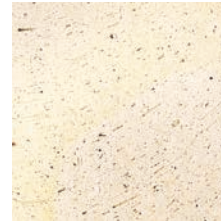
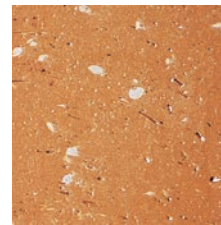


V15 TERRA COTTA - ABBEY

Frost-proof. Made for the restoration of French Abbeys.



Light



Medium



Dark



Black

Black is the darkest color of the terra cotta. It is not actually black.

TERRA COTTA ABBEY 1 OF 5

V15 TERRA COTTA - ABBEY

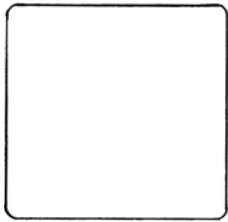
Frost-proof. Made for the restoration of French Abbeys.



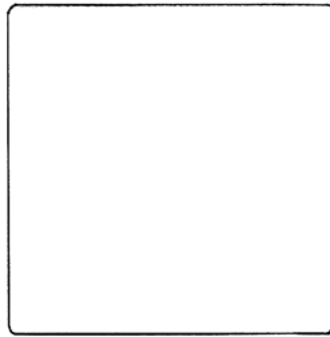
3" x 3" Cabochons in Medium

V15 TERRA COTTA - ABBEY: TILE SIZES

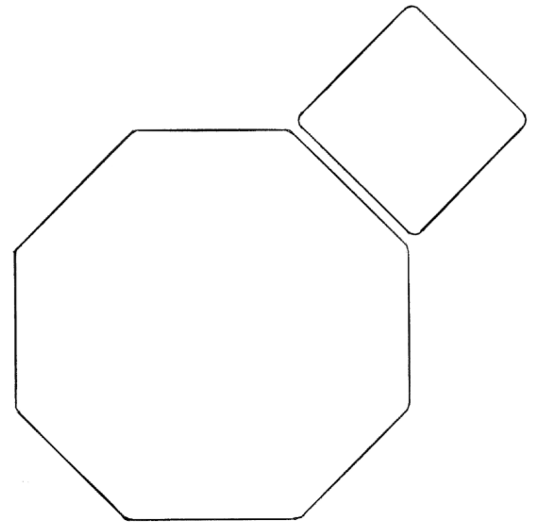
Frost-proof. Made for the restoration of French Abbeys.



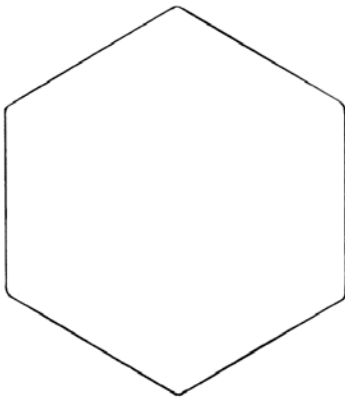
1256 | Square
4" x 4" x 5/8" thick



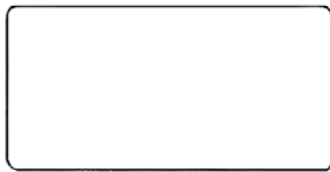
1257 | Square
6" x 6" x 5/8" thick



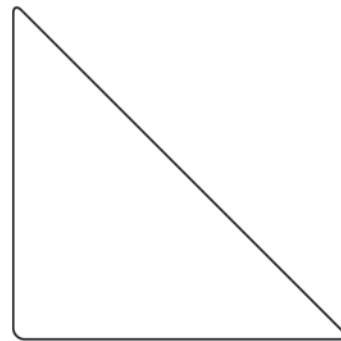
1259 | Octagon with Cabochon (Dots)
7" Octagon with 3" x 3" Cabochon x 5/8" thick



1264 | Hexagon
7" x 7" x 5/8" thick



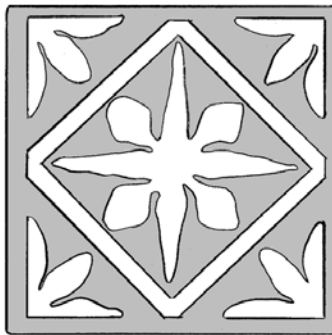
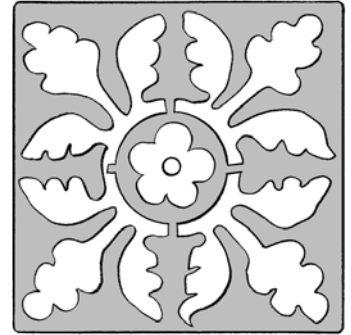
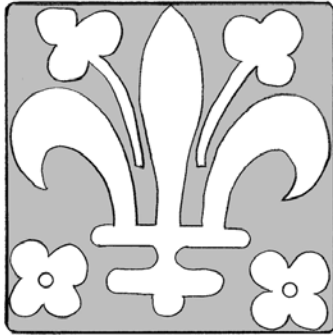
1266 | Rectangle
3" x 6" x 5/8" thick



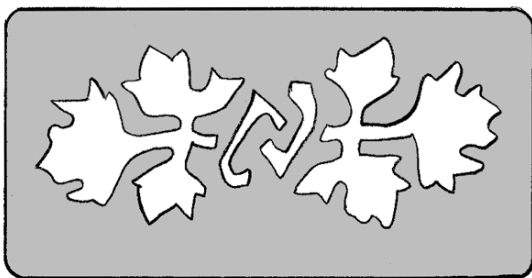
4328 | Triangle
6" x 6" x 5/8" thick

V15 TERRA COTTA - ABBEY: ENCAUSTIC DESIGNS

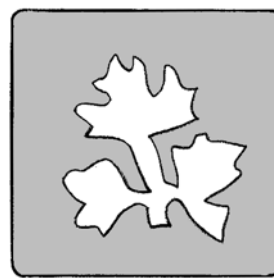
Frost-proof. Made for the restoration of French Abbeys.



4015 | Encaustic Decoration (Set of 6 pieces)
6" x 6" x 5/8" thick



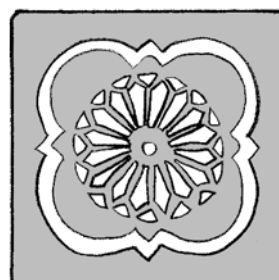
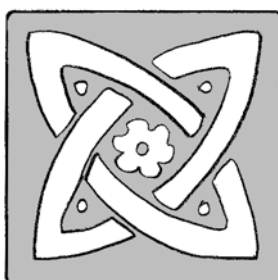
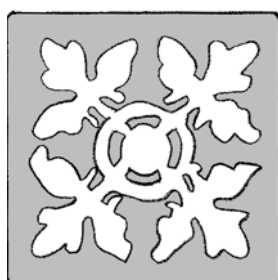
4016 | Encaustic Design Border
3" x 6" x 5/8" thick



4146 | Encaustic Corner Design
3" x 3" x 5/8" thick

V15 TERRA COTTA - ABBEY: ENCAUSTIC DESIGNS

Frost-proof. Made for the restoration of French Abbeys.



4017 | Encaustic Design (Set of 6 pieces)
3" x 3" x 5/8" thick