

TABLE OF CONTENTS

POLISHED BRASS TILE – 3/16" (THIN)	2-4
POLISHED BRASS TILE – 3/8" (THICK)	5-7
POLISHED NICKEL TILE – 3/16" (THIN)	8-10
POLISHED NICKEL TILE – 3/8" (THICK)	11-13



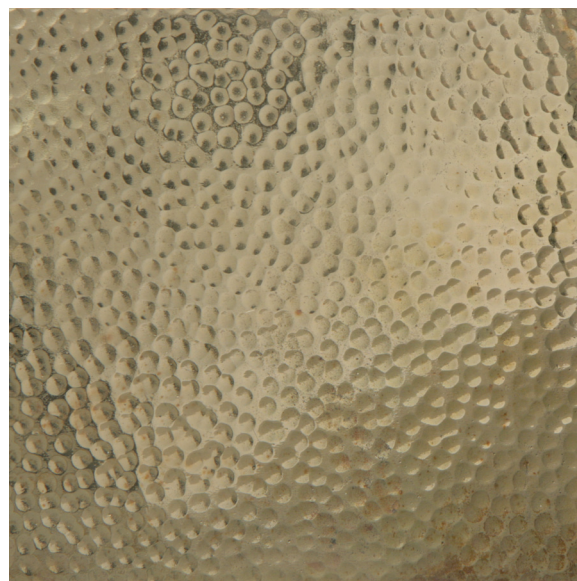
H0574-PB
Smooth
3 x 3 x 3/16"



H0575-PB
Hammered
3 x 3 x 3/16"



H0554-PB
Smooth
6 x 6 x 3/16"



H0555-PB
Hammered
6 x 6 x 3/16"

POLISHED BRASS TILE - 3/16" (THIN)

2010



H0578-PB
Smooth
3/4 x 12 x 3/16"



H0579-PB
Hammered
3/4 x 12 x 3/16"



H0570-PB
Smooth
3 x 12 x 3/16"



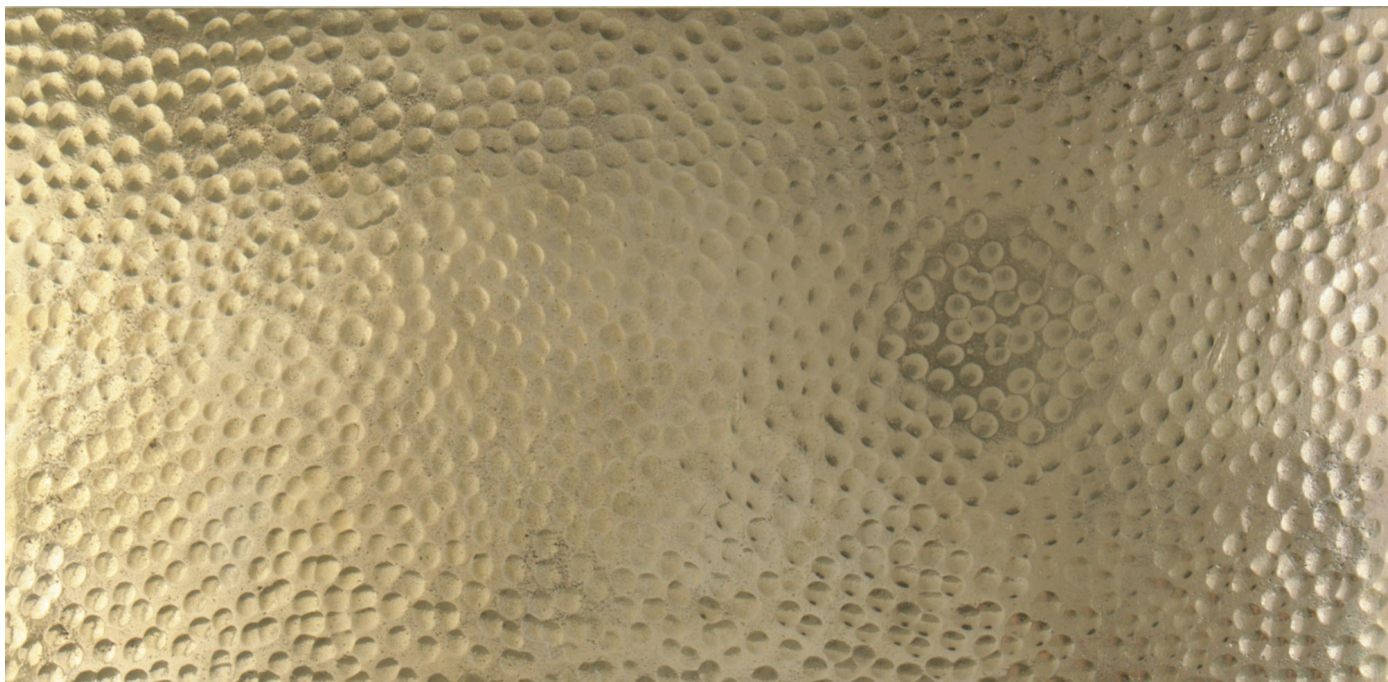
H0571-PB
Hammered
3 x 12 x 3/16"

POLISHED BRASS TILE - 3/16" (THIN)

2010



H0566-PB
Smooth
6 x 12 x 3/16"



H0567-PB
Hammered
6 x 12 x 3/16"

POLISHED BRASS TILE - 3/8" (THICK)

2010



H0572-PB
Smooth
3 x 3 x 3/8"



H0573-PB
Hammered
3 x 3 x 3/8"



H0556-PB
Smooth
6 x 6 x 3/8"



H0557-PB
Hammered
6 x 6 x 3/8"

POLISHED BRASS TILE - 3/8" (THICK)

2010



H0580-PB
Smooth
3/4 x 12 x 3/8"



H0581-PB
Hammered
3/4 x 12 x 3/8"



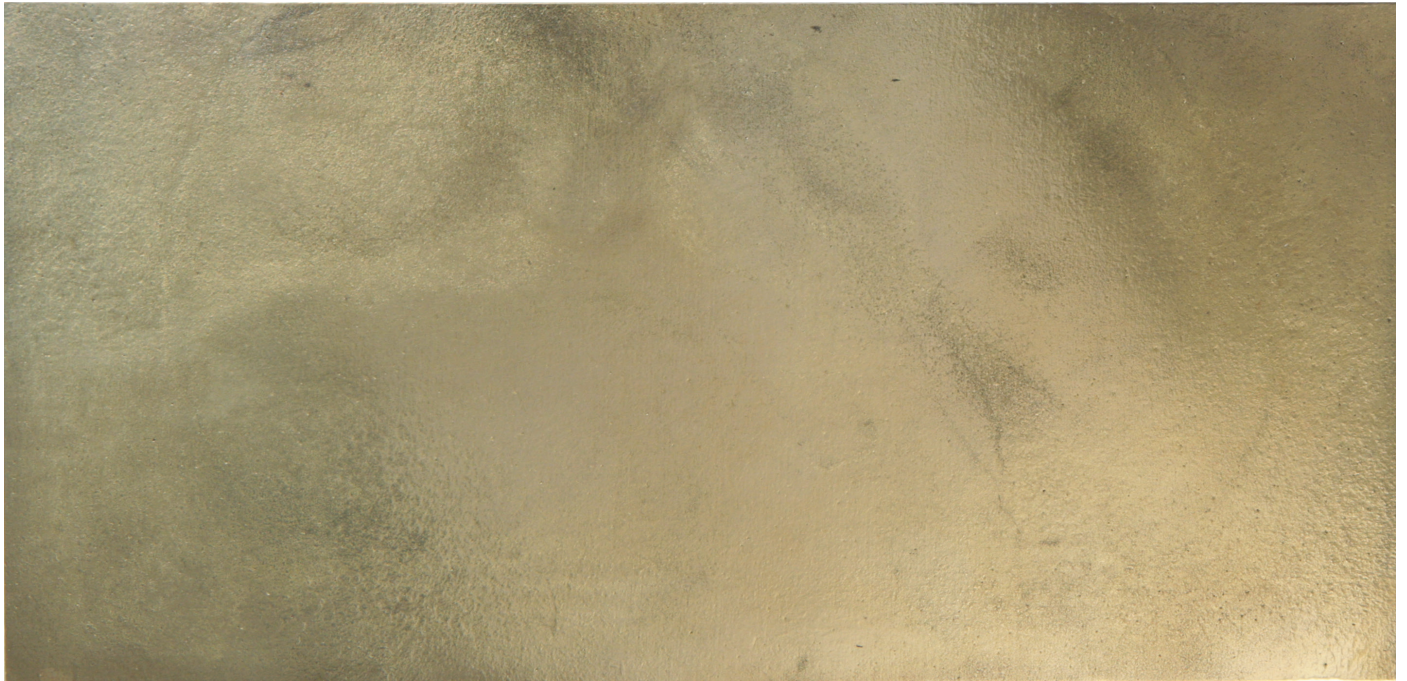
H0568-PB
Smooth
3 x 12 x 3/8"



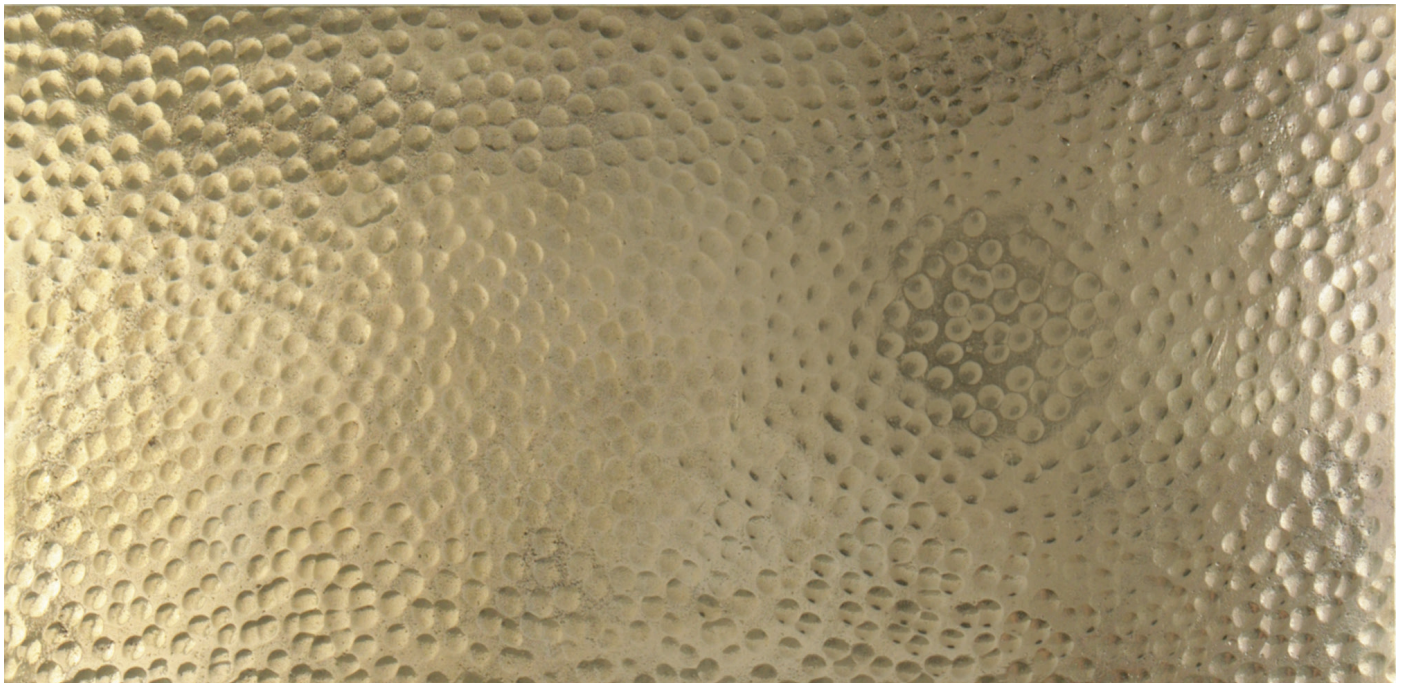
H0569-PB
Hammered
3 x 12 x 3/8"

POLISHED BRASS TILE - 3/8" (THICK)

2010



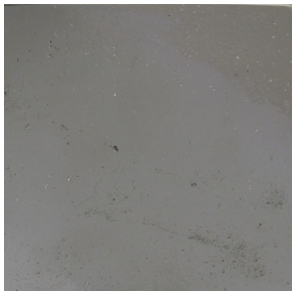
H0564-PB
Smooth
6 x 12 x 3/8"



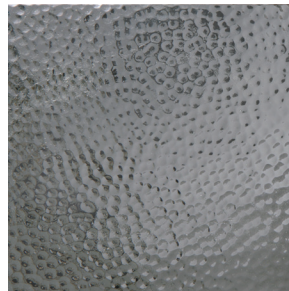
H0565-PB
Hammered
6 x 12 x 3/8"

POLISHED NICKEL TILE - 3/16" (THIN)

2010



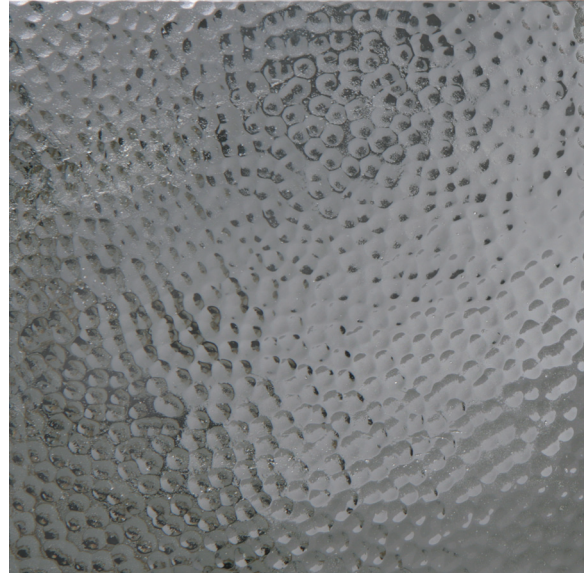
H0574-PN
Smooth
3 x 3 x 3/16"



H0575-PN
Hammered
3 x 3 x 3/16"



H0554-PN
Smooth
6 x 6 x 3/16"



H0555-PN
Hammered
6 x 6 x 3/16"

POLISHED NICKEL TILE - 3/16" (THIN)

2010



H0578-PN
Smooth
3/4 x 12 x 3/16"



H0579-PN
Hammered
3/4 x 12 x 3/16"



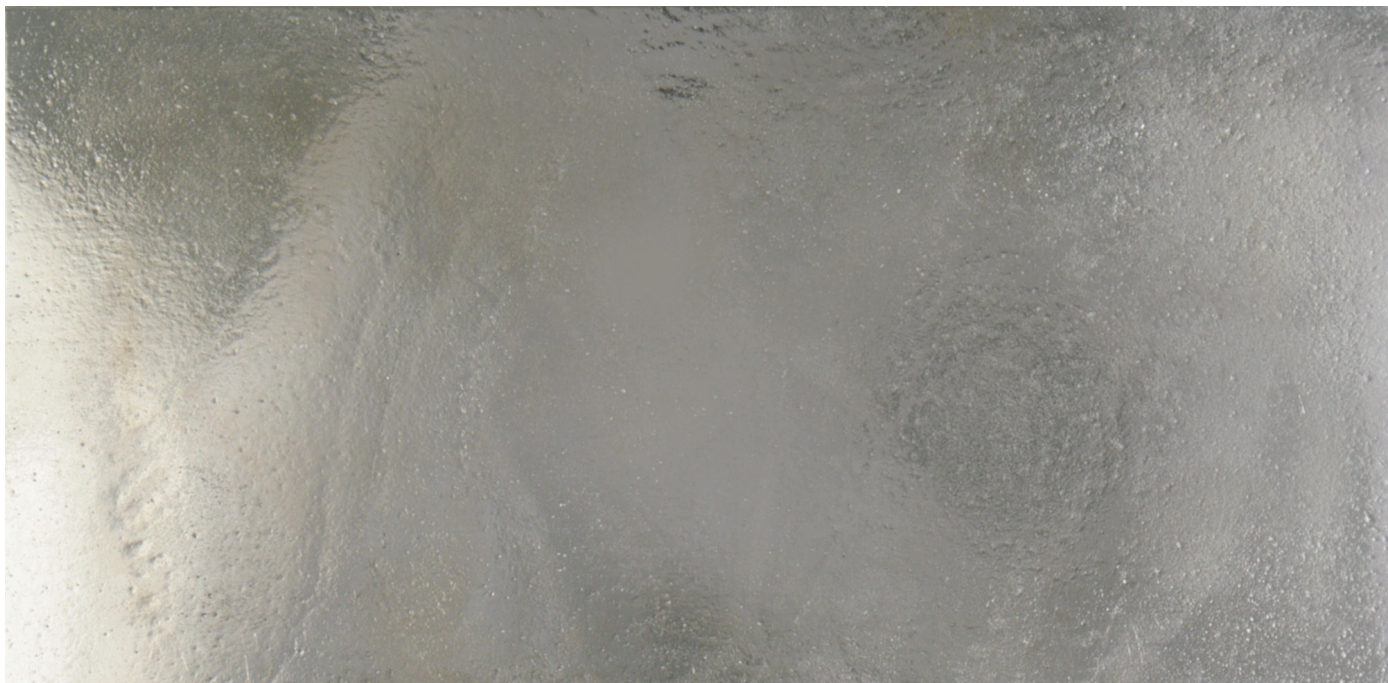
H0570-PN
Smooth
3 x 12 x 3/16"



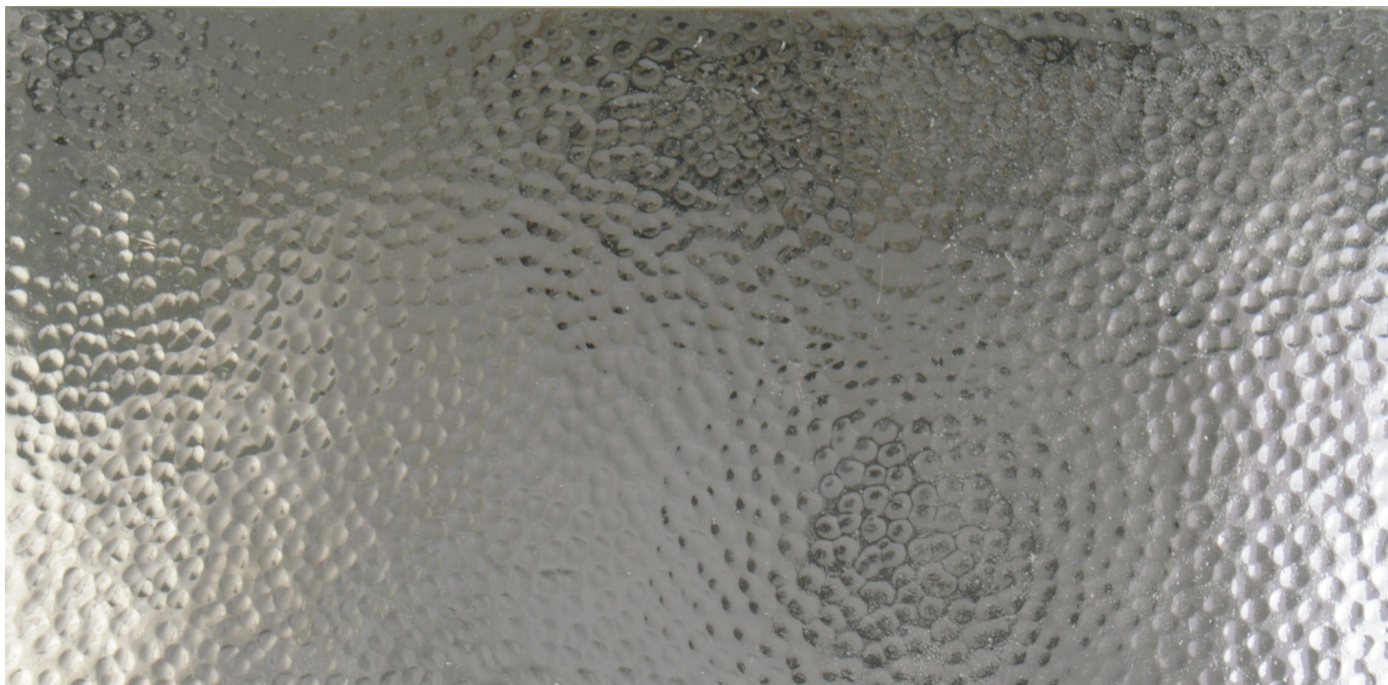
H0571-PN
Hammered
3 x 12 x 3/16"

POLISHED NICKEL TILE - 3/16" (THIN)

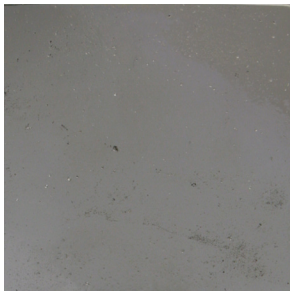
2010



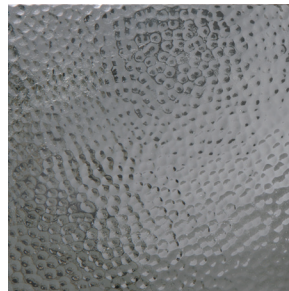
H0566-PN
Smooth
6 x 12 x 3/16"



H0567-PN
Hammered
6 x 12 x 3/16"



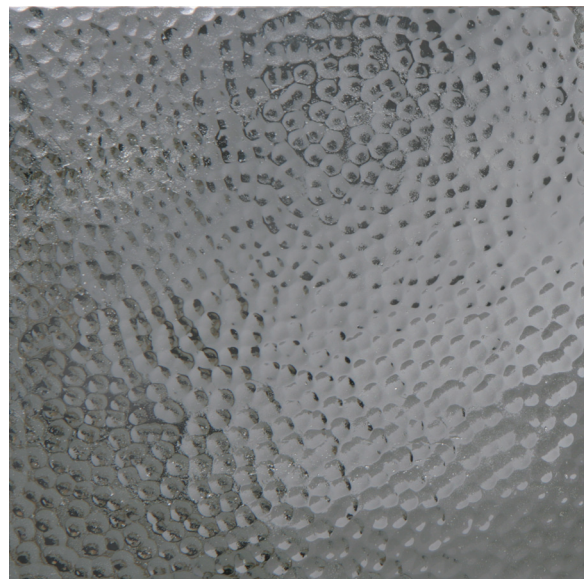
H0572-PN
Smooth
3 x 3 x 3/8"



H0573-PN
Hammered
3 x 3 x 3/8"



H0556-PN
Smooth
6 x 6 x 3/8"



H0557-PN
Hammered
6 x 6 x 3/8"

POLISHED NICKEL TILE - 3/8" (THICK)

2010



H0580-PN
Smooth
3/4 x 12 x 3/8"



H0581-PN
Hammered
3/4 x 12 x 3/8"



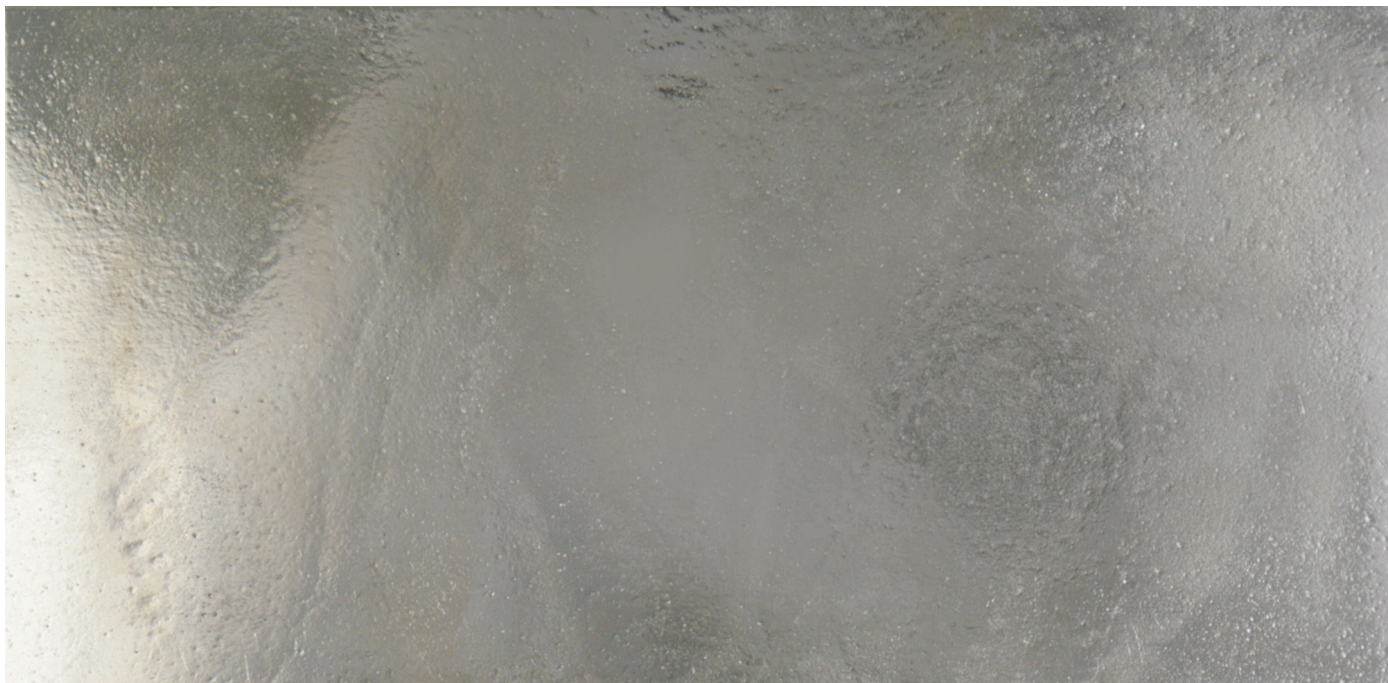
H0568-PN
Smooth
3 x 12 x 3/8"



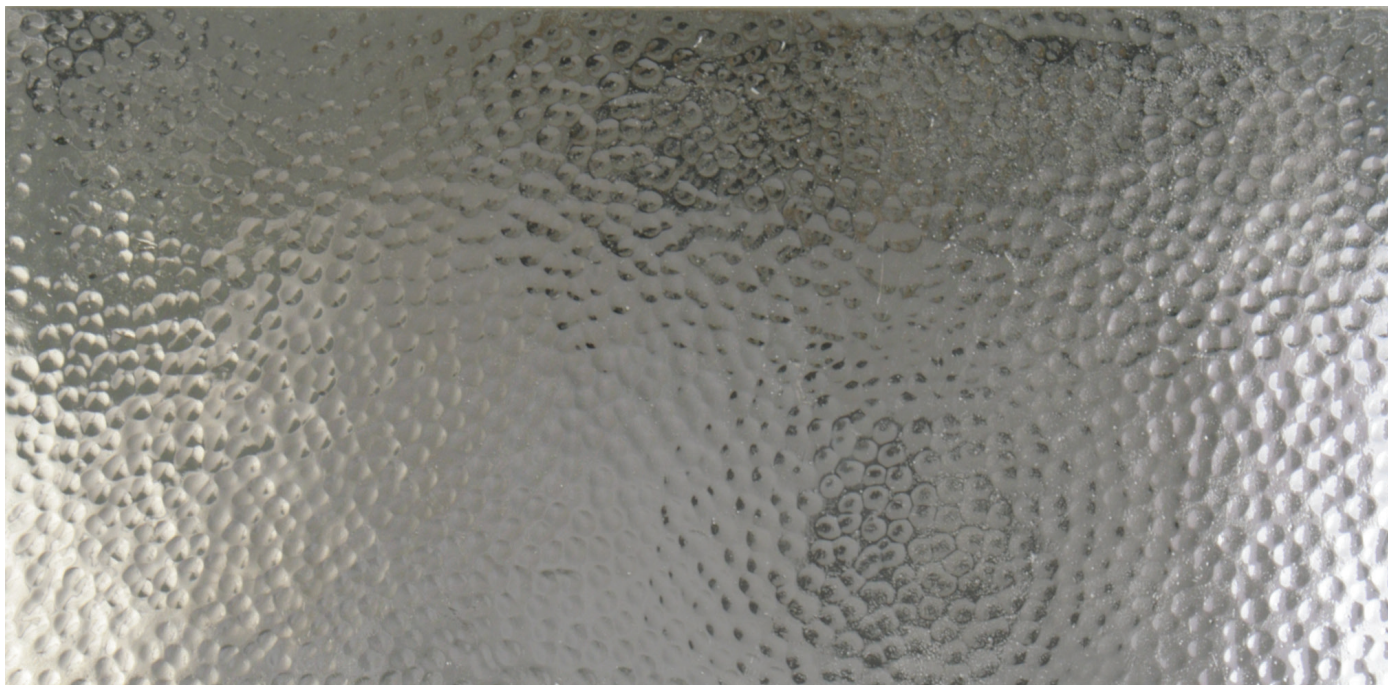
H0569-PN
Hammered
3 x 12 x 3/8"

POLISHED NICKEL TILE - 3/8" (THICK)

2010



H0564-PN
Smooth
6 x 12 x 3/8"



H0565-PN
Hammered
6 x 12 x 3/8"