

**Yale Club Glass Towel Bar 1 1/2"Ø**

UA2009 BA Series

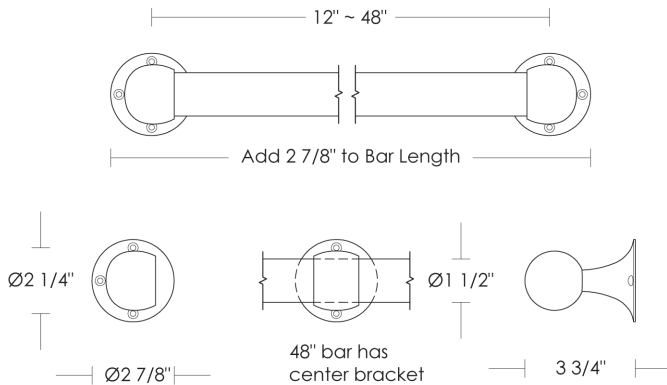
- Price 1 Polished Brass
- Price 2 Green Patina\*, Brown Patina\*, Antique Brass\*
- Price 3 Statuary Brown [gloss or matte]\*  
Statuary Black [gloss or matte]\*
- Price 4 Polished Nickel, Satin Nickel\*, Light Pewter\*  
Polished Chrome  
Black Nickel [gloss or matte]\*

**\*** Custom finishes not returnable

Notes: Our metals are living finishes; they will change overtime and will never rust

Towel bar widths are center-to-center of mounting brackets.

48" towel bar requires a center bracket.



1 1/2"Ø Replacement Glass Towel Bar

\$165	12"w	UA6103-12 BG
\$195	18"w	UA6103-18 BG
\$250	24"w	UA6103-24 BG
\$315	36"w	UA6103-36 BG
\$370	48"w	UA6103-48 BG

1 1/2" Replacement Bracket

	Center	UA2009-C RP
	End	UA2009-E RP
\$165ea	Price 1	
\$190ea	Price 2	
\$215ea	Price 3	
\$230ea	Price 4	

Yale Club Glass Towel Bar	Overall Length	Price 1	Price 2	Price 3	Price 4
1 1/2" x 12"w UA2009-G12 BA	14 7/8"w	\$380	\$450	\$500	\$520
1 1/2" x 18"w UA2009-G18 BA	20 7/8"w	\$420	\$520	\$560	\$570
1 1/2" x 24"w UA2009-G24 BA	26 7/8"w	\$470	\$540	\$615	\$620
1 1/2" x 36"w UA2009-G36 BA	38 7/8"w	\$520	\$630	\$675	\$695
1 1/2" x 48"w UA2009-G48 BA	50 7/8"w	\$640	\$735	\$780	\$790